



Newport138 series
carriage house

"Highly energy efficient R-Value of 12"

Newport 138 Carriage House Insulated Steel Garage Doors

The Newport 138CH offers homeowners, as well as home builders, the timeless look of carriage house doors, one of the industry's highest insulation values, and the strength and practicality of pre-finished steel in a variety of colors. This is a premium, highly energy efficient door featuring a calculated insulation value of R-12.

- Sandwich-type construction with 1-3/8" polyurethane insulation, pressure bonded between two skins of 26 gauge (.017) G60 steel
- Steel is rust-proofed with hot-dipped galvanizing, pre-painted on both sides with a primer, and finished with a top coat of baked on polyester for an exterior paint thickness of 1.0 mil
- Three layer construction provides a calculated insulation value of R-12, along with exceptional strength and a substantial, solid feel during operation
- Finely detailed stamped carriage panels with a deep woodgrain texture
- Panel options include Short Recessed Grooved Panel or Long Recessed Grooved Panel
- Tongue and Groove section joint with bulb seal for tight closure
- Thermal break between steel skins for maximum energy efficiency
- 7 factory finish colors to choose from

Sizes

Standard widths:

8', 9', 10', 12', 16' and 18'

Special order widths are available in 1" increments up to 18'

Standard heights:

6'6", 7', 7'6", and 8'

7'6" & 8' tall doors are available as either 4 or 5 sections high

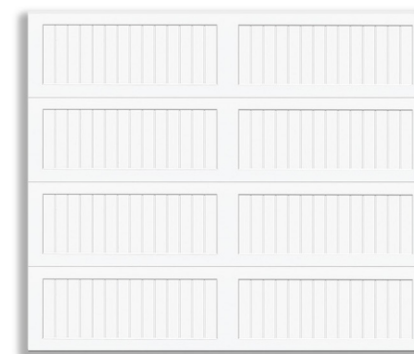
Number of Panels Across

Width	Short Panel/Long Panel	
8', 9' & 10' wide	4	2
12', 14' & 15' wide	6	3
16' & 18' wide	8	4

Panel Options



Short Recessed Grooved Panel



Long Recessed Grooved Panel



Decorative Hardware



Lis Style handle set

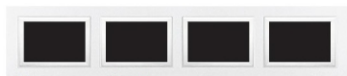


- stamped steel colonial **A**
- stamped steel carriage **B**
- wrought iron colonial **C**
- wrought iron carriage **D**

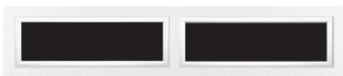
Personalize the look of your Newport Carriage House door by adding a custom window design

Window Options/*snap-in Inserts*

Glazing options include single or double glazed in clear, obscure, or frosted glass.



Short Panel Clear



Long Panel Clear



397 Colonial SP



798 Colonial LP - 10 Lite



320 Waterton SP



320 Waterton LP



897 Prairie SP



897 Prairie LP



591 Cascade SP - 4 Lite



591 Cascade LP

Use our industry leading door design software to view our doors on your home



visit general-doors.com



587 Wyndbridge LP



588 & 587 Breckenridge LP



588 Wyndbridge Arch LP



488 & 798 Berkshire LP



488 Somerton LP - 10 Lite



Placeholder for window insert design



Window inserts are easily removed for complete cleaning of window glass

Color Options



White



Almond



Brown



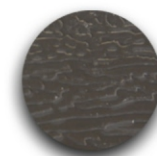
Sandtone



Desert Tan



Black



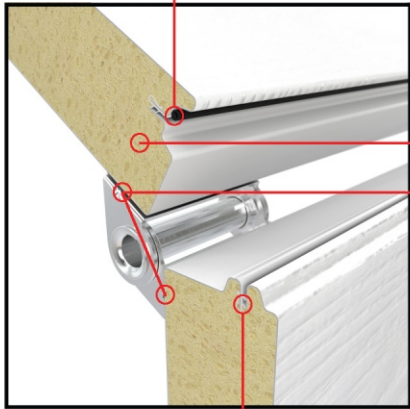
Bronze

Section joint detail

Modified tongue and groove joint

Placed closer to the exterior of the door to limit air and water infiltration

Bulb seal-prevents air leaks

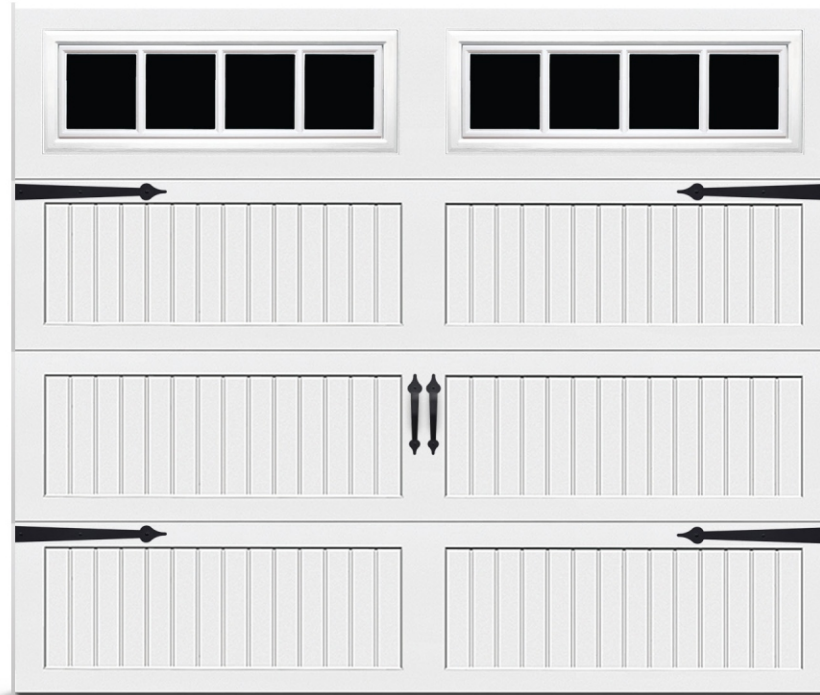


Continuous polyurethane insulated core of high density foam resulting in a R-Value of 12

Heavy duty internal steel backer plate at each hinge location

Thermal break-prevents heat transfer

Standard features of the Newport Carriage House Series includes our tough, anti-corrosion protection - inside and out. Hardware includes heavy-duty track with a unique elliptical curve that reduces the force necessary to roll the door along the track, making opening and closing easier and smoother. Full leaf, heavy gauge hinges, and nylon rollers with steel bearings offer superior strength and years of trouble-free operation.



High-strength, rust-resistant, pre-painted galvanized steel sheets

Available in a variety of colors to match the beauty of your home

Galvanized steel endcaps

Heavy duty for additional strength

Deep woodgrain embossing

The durability of steel without the maintenance hassle of wood

Flexible 3" vinyl bottom seal

With a rust-resistant aluminum retainer

Newport 138CH in Long Recessed Grooved Panel with 587 Wyndbridge LP inserts. Shown with stamped carriage hardware.



Lifetime limited warranty against rust-through and/or delamination of door face. Three year hardware warranty. See dealer for complete warranty information.

Your Local Authorized General Doors Distributor:

GENERAL DOORS
Corporation

1 Monroe Street
PO Box 205 Bristol, PA 19007-0205
215.788.9277 Fax: 215.788.9450
general-doors.com
sales@general-doors.com

Green Building Benefits

Energy savings from insulation value, local manufacturing, recycled content, and product longevity.

